



# Public Hearing Comments in Advance of Preparing Trustee Area Map Options

August 6, 2025

Jonathan Salt, *F3 Law*  
David Lopez, *WSSC*

# What is the California Voting Rights Act (“CVRA”)?



- Took effect January 1, 2003
- Prohibits the use of “at-large” elections when such an election system:

*“impairs the ability of a protected class to elect candidates of its choice or its ability to influence the outcome of an election....”*

(Elections Code §14027.)

# What is a “protected class?”



- A class of voters who are members of a ***race, color, or language minority group***, as this class is referenced and defined in the federal Voting Rights Act of 1965 (52 U.S.C. Sec. 10301 et seq.).

(Elections Code §14026(d).)

# What is “Racially Polarized Voting?”



F3 Law

- Voting in which there is **a difference in the choice of candidates or other electoral choices that are preferred by voters in a *protected class*, and in the choice of candidates and electoral choices that are preferred by voters in the *rest of the electorate*.**

(Elections Code §14026(e).)

# Does not require intent

- The CVRA is far broader than its federal counterpart
- Much easier for a plaintiff to bring a claim against a government entity
- Proof of intent on the part of voters or elected officials to discriminate against a protected class is not required (Elections Code §14028(d).)

# Right to Attorneys' and Expert Fees



F3 Law

- CVRA grants a prevailing plaintiff the right to recover reasonable attorneys' fees **AND** expert witness fees.
- If district wins, it is **not** granted the same right.

(Elections Code §14030.)



# What is a “By-Trustee Area” Election System

- *Only safe harbor from a CVRA claim*
- School district is divided into trustee areas
- A governing board member is elected from each trustee area
- Board members are elected ***by only the registered voters in the particular trustee area*** where the governing board member resides

# Current Step: Two Public Hearings

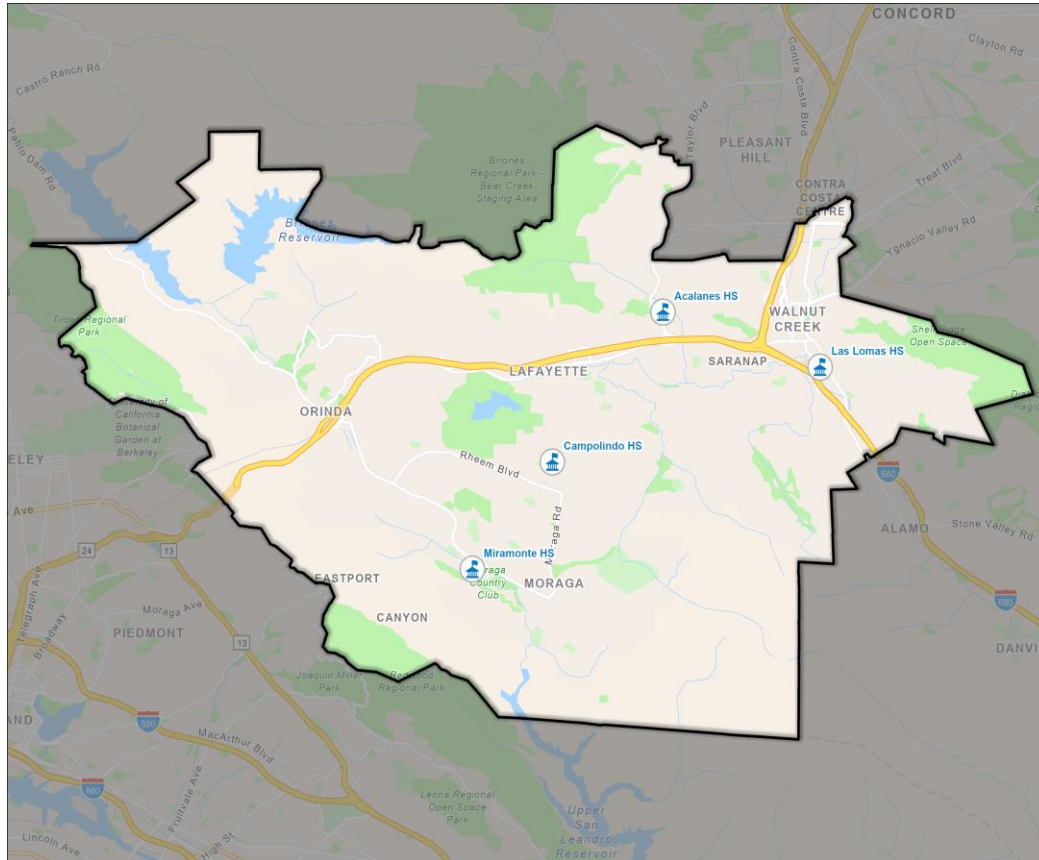


- Prior to the preparation of draft trustee voting area plans by the District's demographer
- Receive community comments and public testimony concerning:
  - The composition of potential trustee voting areas associated with the District's transition to a by-trustee area election system



# District's Demographics

## 2020 Census Data (Total Population)



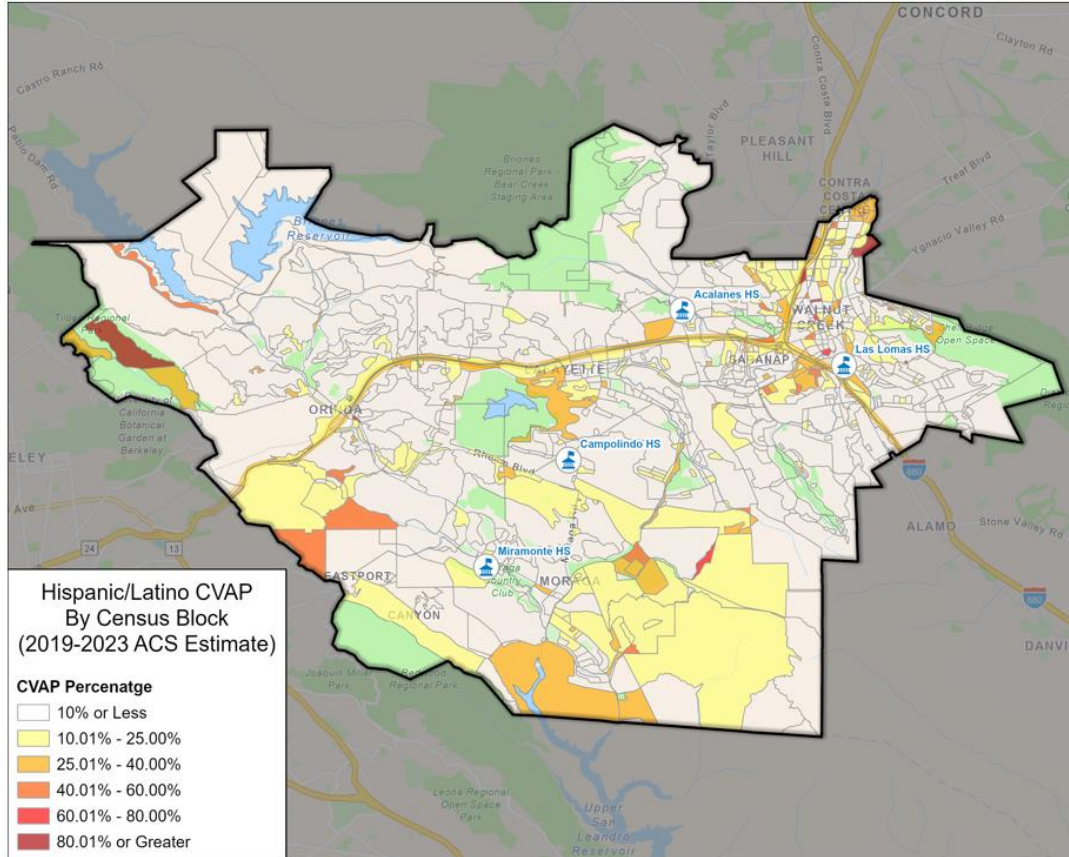
Population	Total Population		Age 18 +	
	Total	%	Total	%
Hispanic/Latino	10,870	9.1%	7,814	8.2%
White	79,149	66.5%	66,087	69.4%
Black/ African American	1,872	1.6%	1,549	1.6%
American Indian/Alaska Native	116	0.1%	100	0.1%
Asian	18,211	15.3%	14,665	15.4%
Native Hawaiian/ Pacific Islander	169	0.1%	148	0.2%
Other	740	0.6%	542	0.6%
Two or More Races	7,912	6.6%	4,313	4.5%
<b>Total Population</b>	<b>119,039</b>	<b>100%</b>	<b>95,218</b>	<b>100%</b>

# Keep in mind...

- With a total population of **119,039**, each Trustee Area will **include *approximately 23,808 people***.
- The difference between the largest and smallest trustee areas can be no more than 2,380 people.
- Census Blocks vary significantly in shape, size, and population totals.
- Census Blocks generally are not to be “split” with a Trustee Area boundary line – since we would lose the accuracy of the population balancing count.

# District's Demographics

## Hispanic Citizen Voting Age Population Estimates

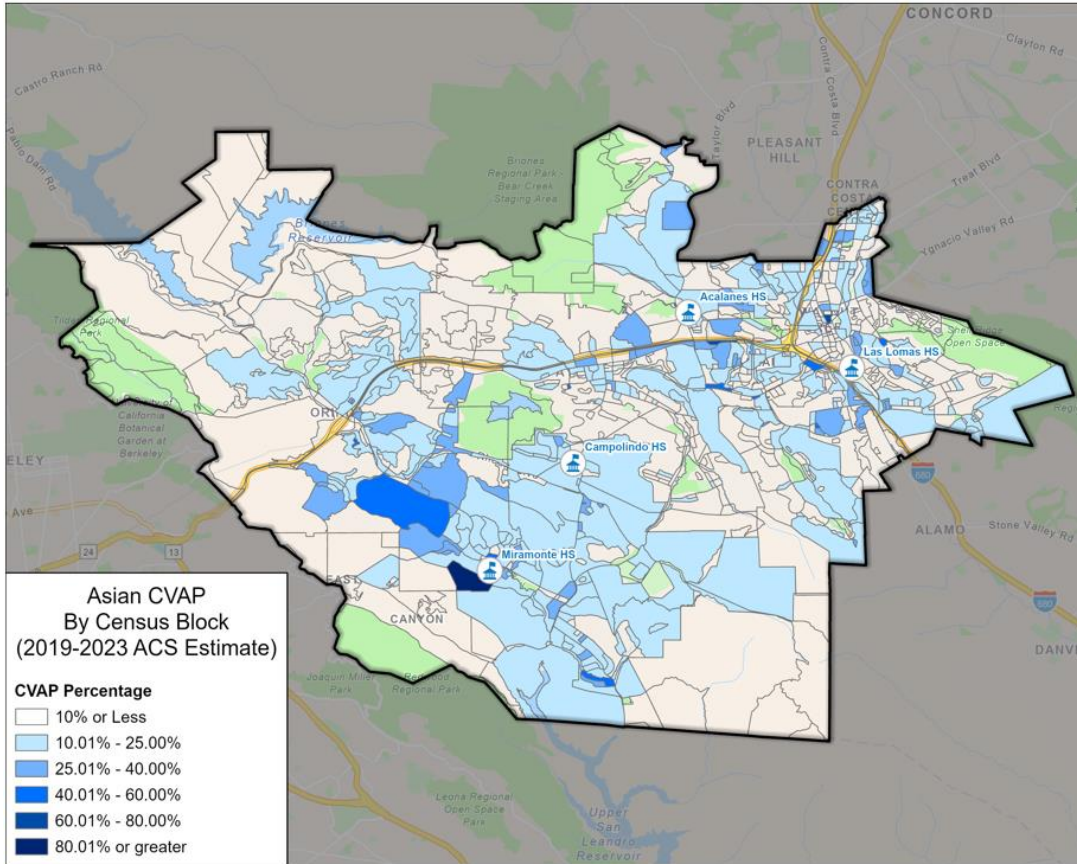


Population	2019-2023 <sup>[1]</sup>	
	Total	%
Hispanic/Latino	7,258	8.3%
White	64,173	73.3%
Black/ African American	1,545	1.8%
American Indian/Alaska Native	146	0.2%
Asian	11,155	12.7%
Native Hawaiian/ Pacific Islander	75	0.1%
Two or More Races	3,219	3.7%
<b>Total Population</b>	<b>87,571</b>	<b>100%</b>

<sup>[1]</sup> CVAP data taken from the California Statewide Database which provides the 2019-2023 American Community Survey CVAP estimates with DOJ by 2020 Census blocks and adjustment to reallocate incarcerated persons to their last known residential address.

# District's Demographics

## Asian Citizen Voting Age Population Estimates



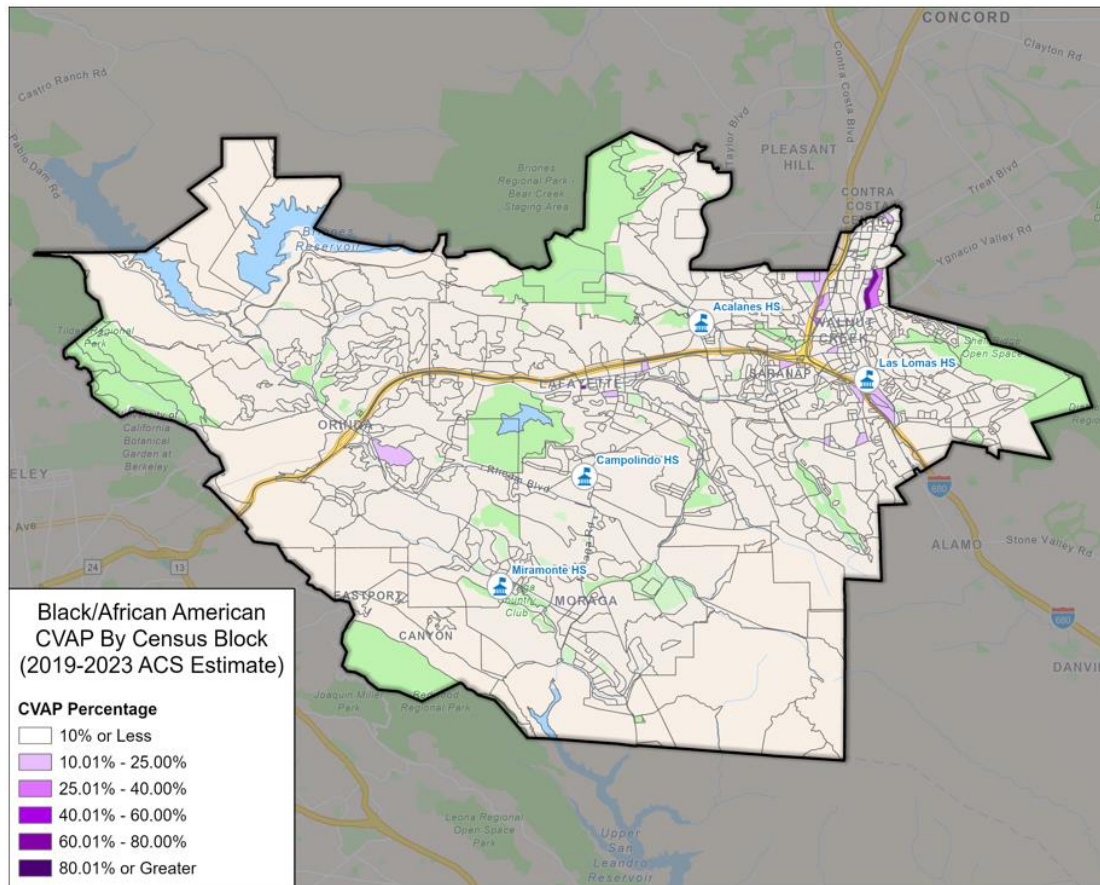
Population	2019-2023 <sup>[1]</sup>	
	Total	%
Hispanic/Latino	7,258	8.3%
White	64,173	73.3%
Black/ African American	1,545	1.8%
American Indian/Alaska Native	146	0.2%
Asian	11,155	12.7%
Native Hawaiian/ Pacific Islander	75	0.1%
Two or More Races	3,219	3.7%
<b>Total Population</b>	<b>87,571</b>	<b>100%</b>

<sup>[1]</sup> CVAP data taken from the California Statewide Database which provides the 2019-2023 American Community Survey CVAP estimates with DOJ by 2020 Census blocks and adjustment to reallocate incarcerated persons to their last known residential address.



# District's Demographics

## Black Citizen Voting Age Population Estimates



Population	2019-2023 <sup>[1]</sup>	
	Total	%
Hispanic/Latino	7,258	8.3%
White	64,173	73.3%
Black/ African American	1,545	1.8%
American Indian/Alaska Native	146	0.2%
Asian	11,155	12.7%
Native Hawaiian/ Pacific Islander	75	0.1%
Two or More Races	3,219	3.7%
<b>Total Population</b>	<b>87,571</b>	<b>100%</b>

<sup>[1]</sup> CVAP data taken from the California Statewide Database which provides the 2019-2023 American Community Survey CVAP estimates with DOJ by 2020 Census blocks and adjustment to reallocate incarcerated persons to their last known residential address.



# ***How should Trustee Area boundary lines be drawn???***

# Type of Feedback & Commentary Being Solicited

*"I would like to keep Neighborhood X and Neighborhood Y in the same trustee area..."*

# Type of Feedback & Commentary Being Solicited

*"I think . . .*

- Hwy 24 / Interstate 680
- Pleasant Hill Road
- Olympic Blvd
- Lafayette Reservoir area

*. . . may make sense as a trustee area boundary because . . .*

- It seems like a natural boundary
- It makes sense geographically
- It appropriately groups communities of interest



# After Pre-Map Public Hearings



- Draw Draft Trustee Area Plans
  - Demographer to use 2020 Census Data and additionally permitted updated data.
  - Population must be as equal “as is practicable” – people, not citizens.
  - Ed Code section 1002: “...trustee areas shall be as nearly equal in population...”
  - A certain amount of deviation (10%) may be permitted.

# Criteria for Consideration

- Comply with the U.S. Constitution.
- Comply with the California Constitution.
- **Population Balance:**
  - Each area shall contain nearly equal number of inhabitants
- **Comply with the Federal Voting Rights Act:**
  - Determine whether it is possible to create an election district or districts in which a minority group is sufficiently large and geographically compact to constitute a majority in a single-member district.

# Criteria for Consideration

## ***AB 764 / Elections Code § 21130***



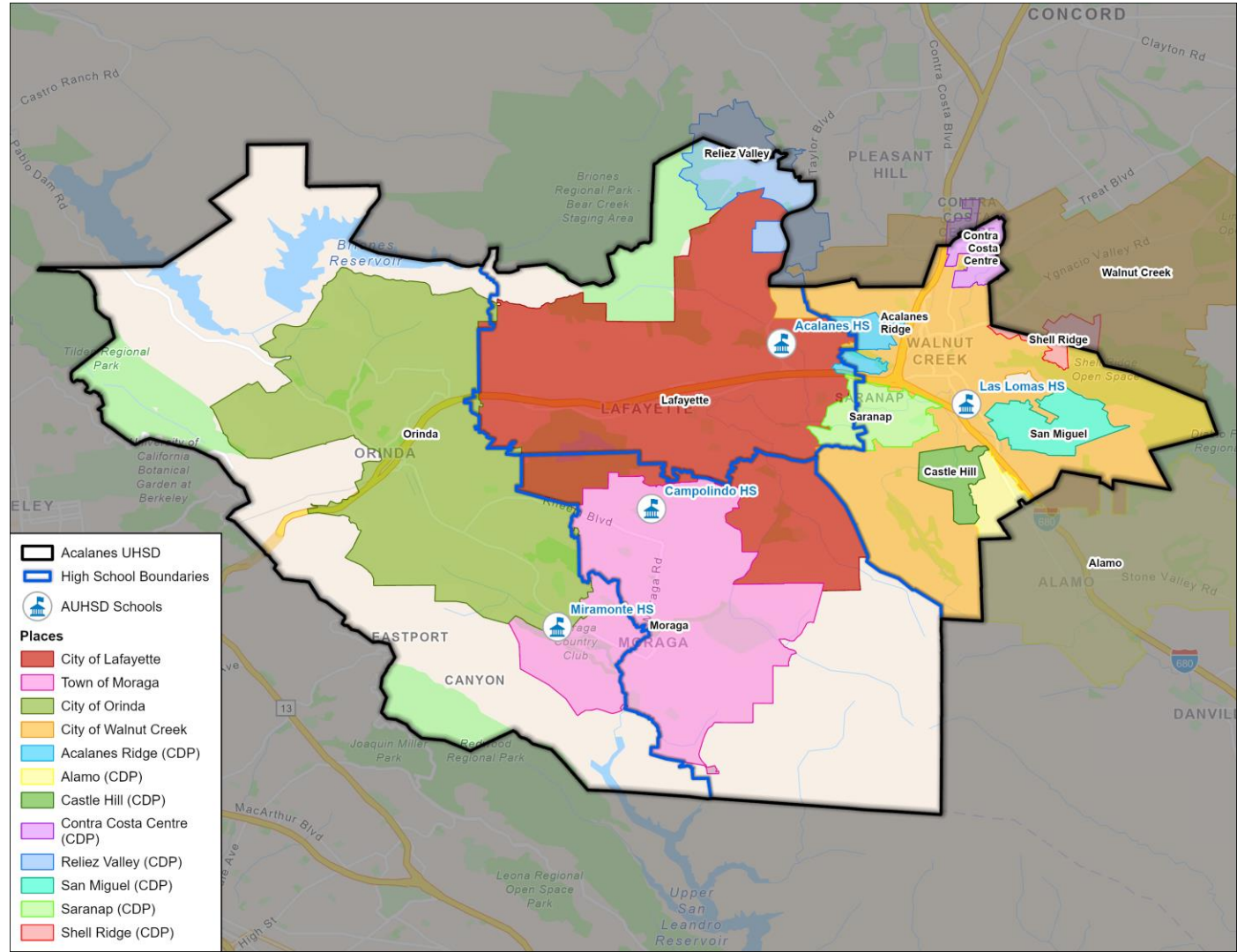
### Order of priority:

- ❑ Contiguous
- ❑ Local Neighborhoods/Communities of Interest
- ❑ City/Census designated places
- ❑ Natural/artificial boundaries
- ❑ Geographical compactness

### Other Criteria for Consideration:

- ❑ Other local considerations
- ❑ May not adopt boundaries for the purpose of favoring/discriminating against an incumbent, political candidate or political party.

# Cities, CDPs, & Attendance Areas



# What is a “Community of Interest”?

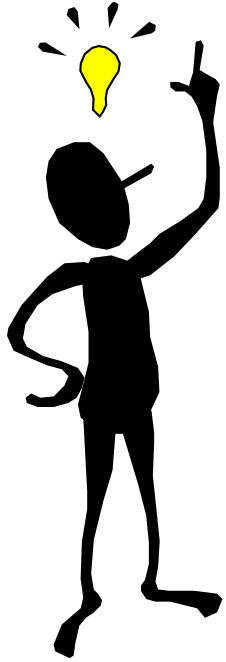


F3 Law

- ***A population that shares common social or economic interests that should be included within a single election district for purposes of its effective and fair representation.***
- Characteristics of communities of interest may include, but are not limited to, shared public policy concerns such as education, public safety, public health, environment, housing, transportation, and access to social services.
- Characteristics of communities of interest may also include, but are not limited to, cultural districts, shared socioeconomic characteristics, similar voter registration rates and participation rates, and shared histories.
- Communities of interest do not include relationships with political parties, incumbents, or political candidates.

(Elections Code §21130(c)(2).)

# Final Thoughts



- Does not change overall District boundaries
- Does not change school attendance boundaries
- **Does not** change how the District is governed:
  - Each Board member, regardless of the trustee area in which he/she resides, still owes fiduciary duty to entire District
  - Still one District with common goals and challenges!!!

# Schedule

<b>August 6, 2025</b>	<b>Pre-Map Public Hearing #1</b>
<b>August 20, 2025</b>	<b>Pre-Map Public Hearing #2</b>
<b><i>Draft map options prepared by demographer</i></b>	
<b>September 3, 2025</b>	<b>Map Public Hearing #1</b>
<b>September 17, 2025</b>	<b>Map Public Hearing #2</b>
<b>October 15, 2025</b>	<b>Map Public Hearing #3 / Map Adoption</b>



## Governing Board

[Governing Board Overview](#)[Transition to By-Trustee Area Election System](#)[Governing Board and District Goals](#)[AUHSD Governance Handbook 2024-2025](#)[Board Policies](#)[Board Meeting Dates](#)[Board Meeting Agendas](#)[Board Meeting Video Broadcast](#)[Board Resolutions](#)[Home](#) > [District](#) > [Governing Board](#) > Transition to By-Trustee Area Election System[July 21 Message to AUHSD Community Informing of the Transition](#)[REQUIRED MAJORITY-MINORITY ANALYSIS - August 4](#)[August 6 Public Hearing Notification August 6 Presentation](#)[INFORMATIONAL FLYER](#)[FREQUENTLY ASKED QUESTIONS](#)

### BACKGROUND

At the Wednesday, July 9, 2025, Special Meeting of the Governing Board, the Board considered and adopted [Resolution 25-26-01](#) initiating a transition to a "By-Trustee Area" election system commencing with the 2026 Governing Board Election. Please see the timeline below for opportunities for public input.

Please note, that this process has no impact on student and school attendance boundaries.

In 2002, the California State Legislature enacted the California Voting Rights Act ("CVRA"), which prohibits the use of at-large elections of governing board members for a school district if it "impairs the

### Live Feedback Opportunities (Prior to Creation of Map Options)

<u>Date</u>	<u>Place*</u>	<u>Time**</u>
Wednesday, August 6, 2025 <i>Public Hearing Regular Governing Board Meeting</i>	Acalanes Union High School District District Office Community Room 1212 Pleasant Hill Road Lafayette, CA 94549	7:05 p.m.
Wednesday, August 20, 2025 <i>Public Hearing Special Governing Board Meeting</i>	Acalanes Union High School District District Office Community Room 1212 Pleasant Hill Road Lafayette, CA 94549	7:05 p.m.

### Live Feedback Opportunities (After Creation of Map Options)

<u>Date</u>	<u>Place*</u>	<u>Time**</u>
Wednesday, September 3, 2025 <i>Public Hearing Regular Governing Board Meeting</i>	Acalanes Union High School District District Office Community Room 1212 Pleasant Hill Road	7:45 p.m.









F3 Law

BUSINESS & FACILITIES

CHARTER SCHOOLS

eMATTERS

GOVERNANCE & LEADERSHIP

HIGHER EDUCATION

LABOR & EMPLOYMENT

LITIGATION

STUDENT SERVICES & SPECIAL EDUCATION

[F3Law.com](http://F3Law.com)

Fresno

Los Angeles

Oakland

Inland Empire

Sacramento

San Diego